



WHITEHORSE MIDDLE SCHOOL CONNECTION

A Monthly Publication Linking School and Home



Annie Greencrow Whitehorse Middle School

218 Schenk Street

Madison WI 53714-2398

Deborah Ptak, Principal

Phone: 204-4482

Safe Arrival: 204-4481

Office: 204-4480 or 204-4490

Fax: 204-0538

Website: www.madison.k12.wi.us/whitehorse/

A Note from the Principal:

Hello Whitehorse Families,

I hope that everyone had a wonderful summer and that you all are ready for an exciting 2010-11 academic year. Many teachers have been working through the summer to fine-tune curriculum, enhance our community building lessons and attend trainings on instructional design and the use of technology in the classroom. Our building upgrades continue with the installation of brand new hallway and classroom floor tiles, new classroom furniture and new computer technology for student use!

Please take a few moments as a family to review this newsletter. It contains some very important information that will help you get ready for registration and the first few weeks of school. Some highlights include:

- The new MMSD on-line registration process;
- Early Release Wednesdays for staff Professional Collaboration Time;
- The new Professional Collaboration Time (PCT) information corner;
- New start and dismissal times;
- MSCR programming;
- PTO plans; and
- School Supply list

The first day of school for 6th graders is Wednesday, September 1st. The first day for 7th and 8th graders is Thursday, September 2nd. I hope that the remainder of your summer is filled with relaxation and joy. I look forward to seeing everyone in September.

Deborah Ptak, Principal





Calendar Dates for August/September



August

August 18	8 th Grade Registration - 9:00-11:30 in LMC
August 19	7 th Grade Registration - 9:00-11:30 in LMC
August 20	6 th Grade Registration - 9:00-11:30 in LMC
August 24	6 th Grade Smart Start - 8:30-Noon in LMC
	Make-up Registration 3:30-6:00 in LMC

September

September 1	School Opens - 6th GRADE ONLY
September 2	All Students Report for School/School Breakfast Program Begins
September 6	School Closed for Labor Day
September 15	Early Release @ 1:37pm
September 17	Back to School Dance 2:00-3:25pm
September 22	Early Release @ 1:37pm
	PTO meeting @ 5:30pm in LMC
	Go to School Night - 6:00-7:30
September 29	Early Release @ 1:37pm



ANNIE GREENCROW WHITEHORSE PHONE NUMBERS

Safe Arrival	204-4481
Nancy Judd, Secretary	204-4490
Carol Borland, Secretary	204-4480
Deborah Ptak, Principal	204-4482
Julie Cobb, Learning Coordinator	204-4498
Elizabeth Braun, Nurse	204-1504
Amy Schwab, Guidance Counselor	204-4488
Kelli Ballwahn, Librarian	204-4484
TBD, Social Worker	204-4496
Karen Wydeven, Psychologist	204-4487
Camille Gutierrez, Spanish Translations	204-4617
Annie Hampel, MSCR After School	204-4500
Tracy Warnecke, PBS Coach	204-4492
(Positive Behavior and Support)	



Professional collaboration time to alter middle and high school schedules

Teacher professional collaboration time will be implemented starting in September at all MMSD middle and high schools, resulting in the early release of these students on most Wednesdays.

Students will be released early on Wednesdays during each full week of school for a total of 29 times throughout the school year. An exception is La Follette High School which, due to their four block schedule, will have 24 early release Wednesdays. The early release will be approximately 60 minutes.

The establishment of professional collaboration time is in response to the MMSD Strategic Plan, and is based on the long-standing concept that high quality school districts provide teachers with time for collaboration in order to improve instruction and overall student achievement. The current reality for middle and high school teachers is that they have minimal time to collaborate.

The school year calendar (school days) will remain the same. The MMSD will still be in compliance with the Department of Public Instruction requirements for instructional minutes and students will not lose any instructional time. Middle School start and dismissal times have been adjusted as follows:

<u>Middle School</u>	<u>Starting Times</u>	<u>Dismissal Times</u>	<u>Early Release</u>
Black Hawk	7:35 a.m.	2:37 p.m.	1:37 p.m.
Cherokee	7:35 a.m.	2:37 p.m.	1:37 p.m.
Hamilton	7:35 a.m.	2:37 p.m.	1:37 p.m.
Jefferson	7:35 a.m.	2:37 p.m.	1:37 p.m.
O'Keeffe	7:35 a.m.	2:37 p.m.	1:37 p.m.
Sennett	7:35 a.m.	2:37 p.m.	1:37 p.m.
Sherman	7:35 a.m.	2:37 p.m.	1:37 p.m.
Spring Harbor	7:35 a.m.	2:37 p.m.	1:37 p.m.
Toki	7:35 a.m.	2:37 p.m.	1:37 p.m.
Whitehorse	7:35 a.m.	2:37 p.m.	1:37 p.m.
Wright	8:11 a.m.	3:15 p.m.	2:15 p.m.

<u>High School</u>	<u>Start Time</u>	<u>Dismissal Time</u>	<u>Early Release</u>
East	8:25 a.m.	3:35 p.m.	2:30 p.m.
La Follette	8:15 a.m.	3:23 p.m.	2:20 p.m.
Memorial	8:14 a.m.	3:35 p.m.	2:31 p.m.
West	8:12 a.m.	3:36 p.m.	2:34 p.m.
Shabazz	8:45 a.m.	3:15 p.m.	2:15 p.m. (Mondays)

Bus schedules will be adjusted to accommodate the early release times. After-school opportunities for middle school students during the collaboration times will be provided through MSCR.

MMSD apologizes that this information is being communicated late in the summer, however, due to the complexity of coordinating such an initiative we wanted to ensure that times, schedules and transportation information were correct prior to publicly announcing.

Early release dates (all Wednesdays) for the 2010-11 year will be:

September 15, 22, 29	December 1, 8, 15	March 2, 9, 16, 23, 30
October 6, 13, 20	January 5, 12, 26	April 6, 13, 27
November 3, 17	February 2, 9, 16	May 4, 11, 18, 25

Early release dates for La Follette High School are a little different:

September 15, 22, 29	December 1, 8, 15	March 2, 9, 16
October 13, 20	January 5, 12	April 6, 13, 27
November 10, 17	February 2, 9, 16	May 4, 18, 25

Whitehorse Middle School

2010-2011 School Year Calendar



September

September 1	School Opens-6 th Grade Only
September 2	All Students Report For School
	Breakfast Begins
September 6	NO SCHOOL-Labor Day
September 15	Early Release @1:37
September 17	Back to School Dance 2:00-3:25
September 21	7 th & 8 th Grade Cross Country Meet 2:37-5:30
September 22	Early Release @1:37
	PTO Meeting 5:30 in LMC
	Go to School Night-6:00-7:30pm & Washington
	D.C. planning meeting for 8 th grade summer trip 7:30pm
September 24	APT Trip "As You Like It" 8:30-2:37
September 28	Student of the Month Breakfast 8:45am
	7 th & 8 th Grade Cross Country Meet 2:37-5:30
September 29	Early Release @1:37

October

October 1	Fundraiser Assemblies in the gym 7:50-9:40
October 3	Literacy Run/Walk 10:30am
October 6	Early Release @1:37
October 7	Cookie Dough Fundraiser Begins
	7 th & 8 th Grade Cross Country Meet 2:37-5:30
October 11	LifeTouch Picture Retake Day 8:00-11:00 in LMC
October 13	Early Release @1:37
October 15	Whitehorse Fun Run 9:00am
October 18	Josten's Yearbook Workshop in LMC 8:30-11:30
October 19	Principal for a Day
October 20	Early Release @1:37
	PTO Meeting 5:30 in LMC
	CMP Fair 6-8pm
October 25	Cookie Dough Fundraiser Sale Ends
October 26	Student of the Month Breakfast 8:45
	Locker Cleanout
October 28-29	WEAC Convention-No School

November

November 2-4	6 th 7 th , and 8 th Grade WCKE Testing
November 3	Early Release @1:37
	End of 1 st Quarter
November 8 & 9	8 th Grade WCKE Testing
November 11-12	Parent Teacher Conferences-No School
	Cookie Dough Fundraiser Pickup
November 15	Celebration Assemblies in Gym (7 th Gr 7:50, 6 th Gr 8:40, 8 th Gr 9:40)
November 17	Early Release @1:37
	PTO Meeting 5:30 in LMC
November 23	Student of the Month Breakfast 8:45

November 24 Fundraiser Incentive 2:37-3:25
November 25-26 75 Pt Grade Level Incentive
Thanksgiving Break-No School

December

December 1 Early Release @1:37
December 2 6th Grade Band Concert 7:00pm
December 3 Fade to Black
December 6 UA Switch all grades
December 7 7th & 8th Grade Orchestra Concert, 7:00pm
December 8 Early Release @1:37
6th Grade Orchestra Concert 7:00pm
December 10 Geography Bee 9:00am in Cafeteria
December 14 Student of the Month Breakfast 8:45
6-8 Chorus Concert, 7:00pm
December 15 Early Release @1:37
PTO Meeting 5:30 in LMC
December 16 7th & 8th Grade Band Concert 7:00pm
December 17 Locker Clean Out
December 20-December 31 **Winter Break- NO SCHOOL**

January

January 3 School Resumes
January 5 Early Release @1:37
January 12 Early Release @1:37
PTO Meeting 5:30 in LMC
January 13 Spelling Bee, 9:00am in cafeteria
January 14 Activity Club Photos in Café 8-10:45am
Thunder & Lightning Dance 75pt incentive 1:30-3:25
January 17 **Martin Luther King Jr Day-No School**
January 21 All Schools Early Release for Grading @11:40
End of 2nd Quarter
January 24 3rd Quarter/2nd Semester Begins
January 25 Student of the Month Breakfast 8:45
January 26 Early Release @1:37

February

February 2 Early Release @1:37
9th Grade Scheduling Demo Night at LaFollette 6:00pm
February 4 **NO SCHOOL Parent/Teacher Conferences**
February 7 Celebration Assemblies-7th @7:50; 6th @8:40; 8th @ 9:40
February 9 Early Release @1:37
February 16 Early Release @1:37
February 17 Whitehorse Battle of the Books
February 22 Student of the Month Breakfast 8:45
February 23 PTO Meeting 5:30 in LMC
Literacy Fair 6:00-8:00pm
February 24 Locker Clean Out
February 25 SWEIO Convention- No School

March

March 2	Early Release @1:37
March 3	6 th & 7 th Grade Band Concert 7:00pm
March 9	Early Release @1:37
March 10	8 th Grade Farewell-Parent Planning Meeting 5:30 8 th Grade Band, Choir, Orchestra Concert 7:00 pm
March 14	UA change all grades
March 16	Early Release @1:37 PTO Meeting 5:30 in LMC
March 18	Lifetouch Spring Photos 8-12 in LMC
March 22	Student of the Month Breakfast 8:45 6 th & 7 th Grade Chorus Concert 7:00pm
March 23	Early Release @1:37
March 25	March Madness Student Incentive during UA time by grade level
March 26	Strings Festival
March 29	End of 3 rd Quarter
March 30	Early Release @1:37

April

April 1	75 Pt Incentive Bingo Party 7 th @9:06, 6 th @9:46, 8 th @2:07
April 6	Early Release @1:37
April 7	Talent Show Dress Rehearsal 8:00-2:37 Talent Show Performance 7:00pm @ LaFollette HS
April 8	Legion Nominee's get applications
April 11	Celebration Assemblies 7 th @7:50, 6 th @8:40, 8 th @9:40
April 13	Early Release @1:37
April 15	Locker Clean out
April 18-22	No School - Spring Break
April 25	School Resumes
April 26	Student of the Month Breakfast 8:45
April 27	Early Release @1:37
April 28	8 th Grade Parent Planning Meeting 5:30pm in Rm 185

May

May 4	Early Release @1:37 5 th Grade Parent Orientation 7:00pm LMC
May 6	Legion Applications due
May 9	Point cut off for Dance
May 10	Kennedy 5 th Graders visit Whitehorse-1:00-2:30
May 11	Early Release @1:37
May 12	Mayflower Dance 6 th & 7 th Grades 2:37-4:00pm
May 13	Kroes/Walters Senior Reception - in LMC @7:50am 8 th Grade 75 pt Lunch Incentive Schenk 5 th Graders visit Whitehorse-1:00-2:30
May 17	6 th Grade Band & Orchestra Concert 7:00pm
May 18	Early Release @1:37 PTO Meeting 5:30 in LMC
May 20	Ehlenfeldt/Grothman Senior Reception in LMC @7:50am Locker Clean out
May 24	Student of the Month Breakfast 8:45 6 th , 7 th , 8 th Grade Choir Concert 7:00pm

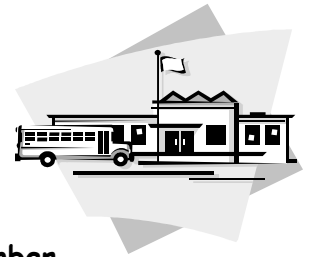
May 25	Early Release @1:37
May 26	8 th Grade Parent Planning Meeting 6:00pm in Rm 185 7 th & 8 th Grade Band Concert 7:00pm
May 27	8 th Grade ceremony practice in gym 9:45-10:20 Never Lost a Point Party 2:00pm
May 30	NO SCHOOL- Memorial Day
May 31	Washington DC Trip Meeting 7:00pm in LMC

June

June 2	Leadership All School BBQ 4:00-6:00pm
June 3	8 th Grade Awards Ceremony in gym 7:50am Point Cut off - permissions & \$ due for Dells Trip by 3:25pm
June 6 & 7	8 th Grade Exams
June 6	Pick up 8 th Grade Dance Decorations @3:25
June 7	Locker Clean out 8 th Grade
June 8	8 th Grade Dells Trip 8:00-3:25 Yearbook distribution 6/7 Gr Locker Clean out
June 9	Grade 6 & 7 Dells Trip 8:00-2:37 8 th Grade Completion Ceremony, Luncheon & Dance 10:00-2:37 Return dance decorations @3:25
June 10	Last day of School for 6 th & 7 th Gr - Dismiss @9:15am
June 20	Summer School Begins

First Day of School

Whitehorse school hours are 7:35 a.m. to 2:37 p.m. each day.



Grade 6

The first day of school for **6TH GRADE STUDENTS ONLY** is **Wednesday, September 1st**. Our staff will be at the front doors to greet students and direct them to their first class. They will spend the day getting to know each other, their teachers, new routines and taking part in many fun activities.

Grade 7

The first day for 7th and 8th grade students is **Thursday, September 2nd**. 7th and 8th grade students should report directly to their first hour class on their schedules where they will reconnect with old friends and greet new students and staff. On the first day each student should come prepared with their class schedule, school ID, school supplies, a lunch and/or lunch money and bus fare or a clear plan for getting home at the end of the day.

Annual Questionnaire:

Each year every family needs to electronically update the MMSD annual questionnaire. Please come to registration prepared to update information regarding address, phone, emergency contacts, and medical information. ***If you have moved over the summer, please bring proof of residency*** in the form of a lease, mortgage papers or a utility bill.

Online Registration:

MMSD is rolling out online registration and enrollment for the 2010-11 school year! Enrolling online will save families time and help the environment by reducing the number of copies MMSD prints.

Parents/guardians will need an Infinite Campus Parent Portal account to enroll online. All parents/guardians who do not have a Parent Portal account will receive at home via postal mail their username and password. Once enrollment is done online, parents will still need to print the verification form and **attend one of the enrollment sessions at their child's school** to pay fees and get a student ID. Online registration and enrollment starts August 9th! Parents/guardians can go to <https://wwwprod.madison.k12.wi.us/webapp0/onlinereg/> to register or enroll.

Registration at Whitehorse in August!

Wednesday, August 18, 2010-8th Grade-

Vision screening for all 8th graders will take place this day. Please bring glasses or wear contacts.

- 9:00 to 11:30 am

Thursday, August 19, 2010- 7th Grade

- 9:00 to 11:30 am

Friday, August 20, 2010- 6th Grade

- 9:00 to 11:30 am

Tuesday August 24, 2010-Late Registrations/Make -Ups

- 3:30-6:00pm

Please note that if you have siblings at different grade levels, you may register on any of the days.



FEES - (To be paid at registration: checks can be made out to Whitehorse Middle School)

Required of all Students

- | | |
|--|-----------------------------|
| • Textbook Fee | \$35.00 per Year |
| • Activity Fee | \$12.00 per Year |
| • Assignment Notebook | \$ 5.00 per Year |
| • Consumable Materials Fee
(Unified Arts, ID Card,
Safety Glasses) | \$15.00 per Year |
| | Total <u>\$67.00</u> |
| • Yearbook (optional) | \$15.00 |

Instrumental Students

- Music Rentals (Band and Orchestra)-first year Grade 6 (first year--Grade 6) \$20.00 per Semester
- Music Rentals (Band and Orchestra)-continuing Grades 7 & 8 \$70.00 per Semester

IDENTIFICATION CARDS:

Photos for student ID cards are taken at registration. It is very important that each student carry their student ID with them to school each day. The ID card is used for checking out materials in the LMC and providing identification during lunch and on the bus. The initial cost of the ID card is included in the registration fee. Replacement fee for lost cards is \$3.00. **Students will receive their ID Cards the first day of school.**

CLASS SWITCH/DROP POLICY

Whitehorse Middle School class switch/drop policy is as follows:

1. 6th graders may make music switches until Friday, September 17th with parent permission.
2. 7th and 8th graders may change or drop their music elective until Friday, September, 17th with parent permission.

All of the above class changes are dependent upon maintaining desirable class sizes and instructor permission. Any changes after the first three weeks of school will require principal approval.

Bring your Smiles to Registration

School pictures will be taken during registration by Lifetouch Studios. The pictures will be used for:

- 1—for the student's ID card
- 2—for the student's school pictures (purchasing a picture package is optional)
- 3—for the yearbook

Enclosed in this newsletter is a Lifetouch flyer with information about pictures and package prices. Please come prepared with payment and order form to make registration run as fast and as smooth as possible.



If you son or daughter is unable to be at registration, a picture makeup date and retake day is scheduled for Monday, October 11, 2010 from 8:00-11:00. If you have any questions regarding the photos please contact Lifetouch at 1-866-620-8073.



WHITEHORSE MIDDLE SCHOOL
SCHOOL PORTRAITS



School portraits will again be taken by Lifetouch during Registration on August 18, 19, 20 & 24. It is important that **ALL** students are photographed as these pictures are used for a variety of purposes, including IDs. The portraits are available for purchase and make wonderful keepsakes. An order form will be provided to you. The form provides information about portrait packages and has an order envelope attached. To purchase portraits, please complete the order form and give it to the Lifetouch Photographer at registration. Below you will find a summary of the packages that will be available.

A12 \$44.00 2 - 8x10s 4 - 5x7s 2 - 3x5s 14 - 2x3s 12 - 1 ½ x 2 ½ s 1 - Portrait CD	B12 \$38.00 1 - 8x10s 4 - 5x7s 2 - 3x5s 14 - 2x3s 12 - 1 ½ x 2 ½ s	C12 \$35.00 4 - 5x7s 2 - 3x5s 12 - 2x3s 8 - 1 ½ x 2 ½ s	D12 \$30.00 3 - 5x7s 2 - 3x5s 8 - 2x3s 13 - 1 ½ x 2 ½ s	E12 \$26.00 2 - 5x7s 3 - 3x5s 10 - 2x3s 4 - 1 ½ x 2 ½ s
A1 \$37.00 2 - 8x10s 2 - 5x7s 2 - 3x5s 14 - 2x3s 12 - 1 ½ x 2 ½ s 1 - Portrait CD	B1 \$31.00 1 - 8x10s 2 - 5x7s 2 - 3x5s 14 - 2x3s 12 - 1 ½ x 2 ½ s	C1 \$28.00 2 - 5x7s 2 - 3x5s 12 - 2x3s 8 - 1 ½ x 2 ½ s	D1 \$23.00 1 - 5x7s 2 - 3x5s 8 - 2x3s 13 - 1 ½ x 2 ½ s	E1 \$19.00 3 - 3x5s 10 - 2x3s 4 - 1 ½ x 2 ½ s
A \$30.00 2 - 8x10s 2 - 5x7s 2 - 3x5s 6 - 2x3s 12 - 1 ½ x 2 ½ s 1 - Portrait CD	B \$24.00 1 - 8x10s 2 - 5x7s 2 - 3x5s 6 - 2x3s 12 - 1 ½ x 2 ½ s	C \$21.00 2 - 5x7s 2 - 3x5s 4 - 2x3s 8 - 1 ½ x 2 ½ s	D \$16.00 1 - 5x7s 2 - 3x5s 8 - 2x3s 13 - 1 ½ x 2 ½ s	E \$12.00 3 - 3x5s 2 - 2x3s 4 - 1 ½ x 2 ½ s

Any questions about Fall Portraits, please contact Lifetouch at 1-866-620-8073.





Whitehorse Middle School School Supply List 2010-1011

Grade 6

- loose leaf paper (3 packs)
- 2 spiral notebooks
- 1 red pronged pocket folder and 1 yellow pronged pocket folder
- pens, 3 boxes of pencils, and erasers
- mini pencil sharpener (a must!)
- scissors
- 3 glue sticks (not bottled glue)
- 2—1 inch binders
- 3 different color highlighters
- colored washable markers
- 1 set of colored pencils
- ruler (with English and metric measurements)
- 3 sets of dividers(5 count)
- TI 30XII calculator (available at School Store) or simple 4 function calculator
- 3 boxes of Kleenex
- a small pencil box or pouch to hold all supplies
- Locker Shelf for organization (optional)



Note: if you like to donate to our community supplies...any extra of the above supplies would be appreciated.

Grade 7

- mini pencil sharpener
- 1 set of dividers (5 count)
- 4 packs of loose-leaf paper*
- 2 spiral notebooks (70 count)
- two 2"-ring binders (One for the am classes and one for the pm classes)
- 2 boxes of pencils, and erasers
- 2 highlighters*
- 3 pocket folders
- 3 boxes of Kleenex*
- 2 rolls of scotch tape for science*
- 1 set of colored markers*
- 4 small glue sticks*
- 1 set of colored pencils*
- Optional-TI 30XII calculator (available at School Store) or other simple calculator
- 8x11 clipboard*
- 3 composition notebooks (100 sheets, black and white cover) for science*



* *Will be collected in homeroom for community supply and use*

Grade 8

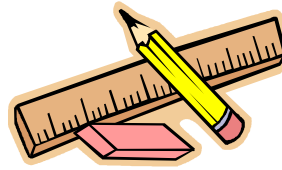
- **Spanish**-1-one inch 3 ring binder, one dry erase marker, spiral notebook, and 1 pack of 3x5 note cards)
- **Language Arts/History** -3 spiral notebooks, 2 pocket folders, 1 pack post-its, and 1 pack of lined 3x5 note cards
- **8th Grade Math**- Please note: A 3 ring binder will be provided to all students for math. Math Explorer calculator (available at School Store) or other simple calculator, a graph paper notebook (available at the school store)
- **Honors Algebra**- Please note: A 3 ring binder will be provided to all students for Honors Algebra, 1 set of dividers (5 count), loose leaf paper and Math Explorer calculator (available at School Store) or other simple calculator.
- **Science**--1-one inch 3 ring binder, loose leaf paper, and sets of dividers(5 count)

General Supplies

- loose leaf paper (3 packs)
- pens, pencils, and erasers (year supply)

Community Supplies (to be collected by homeroom)

- 2 glue sticks
- colored washable markers
- colored pencils
- ruler (with English and metric measurement)
- box of Kleenex
- 1 pack of loose-leaf paper
- 1 black dry eraser marker
- 1 dozen pencils



Music/Phy-ed and Unified Arts/Other Information

- **Math Explorer and TI-30Xa Calculators** are available at the Whitehorse School Store for \$14.00.
- **School Locks:** All students are required to have two Master locks (one for gym locker and one for regular locker) available at the School Store for \$5.00 each. Students are required to have a Whitehorse lock on their lockers at all times.
- **Gym clothes** required are shorts/sweatpants, t-shirt, sweatshirt (for colder weather), Master lock combination lock and tennis shoes.
- **General Music students**-will need a two packet folder
- **Orchestra students**-will need rosin. Violin and viola players will also need a shoulder pad/sponge.
- **Family and Consumer Science**- spiral notebook and pencil
- **Chorus students** - a pencil (not a pen)
- **Backpacks:** Large backpacks on wheels are discouraged since they do not fit in lockers and backpacks are not allowed in class.
- **7th and 8th grade band students:**
Band students playing a reed instrument (clarinet, saxophone) should have a box of reeds.
Brass students should have valve oil and cleaning brushes.

The School Store will be open during registration as well as at 7:35 once the school year begins. In addition, teachers may have specific requests which they inform students of on the first day of class. Supplies may not last the entire year. Please check periodically to see if your child needs new supplies.

PTO...Parent Teacher Organization - Come Join the Fun

The PTO will continue to meet once a month on Wednesdays @ 5:30 p.m. in the Whitehorse LMC. Each meeting will begin with a brief Principal's update followed by a question and answer period. We are shifting our focus this year by creating committees that will focus on specific tasks. Committees will meet on an "as needed" basis. Please consider attending our first meeting on September 22nd and help us determine officers and committees. Sign up sheets will be available at student registration.

Getting to and from School

Our Student Leadership Team encourages everyone to consider "Going Green" by biking, walking or carpooling to and from school. There are bike racks in the front of the school and crossing guards at the intersections. All students should lock their bikes to the racks in the designated areas.

Drop off for those students who are driven to school in a personal car is on either the corner of Wilshire and Schenk, Paus and Schenk or the corner of Schenk and Richard Street. For the safety of your child and the staff who use the lot, please respect the drop off zone and avoid letting students out in the Whitehorse or Schenk parking lots.



From the Health Office

1. Vision screening will be done at 8th grade registration on Wednesday, August 18, 2010. Please remember to bring your glasses or wear your contacts.
2. If your child will be taking medication during school hours, a new consent form must be on file in the Nurses Office for school year 2010-2011. This is a good time to drop off medication for the 2010-2011 school year. Annually, new permission forms for Tylenol and Ibuprofen are needed. All forms will be available during registration.
3. Reminder: Summer is a good time to update immunizations. Please inform the Health Office of any new immunization dates.
4. The Nurse's Office always appreciates socks, sweatpants and sweatshirts if you have extra.
5. Health Concerns: Please update your child's health concerns, medications and strategies for helping your child in the health office.

Physical and Dental Examination

The Madison Metropolitan School District (MMSD) recommends that students have a complete physical and dental examination at least when they enter kindergarten, 3rd, 6th and 9th grades. Certainly, children having complete physical examinations more frequently are desirable. Any time your child has a physical exam, please have your child's physician complete the MMSD physical form (these are located in

physician's offices) and then return it to your child's school nurse. There is also a section on this form for you to complete regarding your child's health.

Please contact Beth Braun, our school nurse, at 204-1504 for any health related needs/concerns. If your child doesn't have health insurance, Beth can help enroll your child in Badger care or see if your child is eligible for limited free health care at Access Community Health Center on E. Washington Avenue.



Hallway and Gym Locks

Each student will be issued both a hallway and a gym locker. It is important that students secure their valuables during the school day. All students should purchase their hallway lock from the Whitehorse school store either at registration or on the first day of school. By doing so, the Principal will be able to open a hallway locker in the case of an emergency using a master key entry. Students should store their possessions in **ONLY THEIR ASSIGNED LOCKER**. We discourage students from bringing any valuables to school. This includes: electronic gaming devices, electronic music/movie devices, jewelry or large amounts of money. Many students carry cell phones as a way to communicate with home either before or after school. Cell phones must be off and stored in a secure place during the academic day. Students can use the school phones when necessary. Each student will be registering their combination with their homeroom teacher at the beginning of the school year.

WHITEHORSE MIDDLE SCHOOL SAFE ARRIVAL PROGRAM

The following information could affect your child's safe arrival to school:

1. Every year, each family completes an Annual Questionnaire. **BE SURE THAT YOU KEEP ALL INFORMATION CURRENT.** The information filled out on the questionnaire is used to contact the parent when children are ill, injured, or the school simply needs to communicate with home. If you need to change or update any information on this form, please contact the school office.
2. When your child is going to be late or absent from school, call the school's Safe Arrival Phone Number 204-4481 by 8:30am the day of the absence. A recorded message will ask for your name, your child's name, the date(s) your child will be absent, and the reason for the absence or tardiness.
3. The Safe Arrival line is open from 4:00pm to 9:30am. As soon as you know your child will be absent, you may call us at 204-4481 night or day.
4. If no contact is made regarding your child's absence, the school will attempt to reach the parent. We must have a telephone number on file where we can reach you between 9:30am and 12:00 noon. An automatic messenger will dial out for all un-excused absences.
5. If you do not have a telephone, please contact the office to let us know what phone number you wish to call where we can check on your child.





THE MIDDLE SCHOOL EATERY

Students who eat lunch at school have a choice of three different value meal items plus various nutritional snacks. The menu is posted in various locations at school, published in the Wisconsin State Journal, and can be seen on cable TV, Channel 10. Students can purchase food with cash or use their ID card to access money previously deposited into their lunch account. Students who lose their ID card must purchase a replacement (cost \$3.00). Deposits into student accounts can be made on any school day. Students will not be allowed to use their accounts until money is deposited and will only be allowed to purchase food items for which they have money in their account. Payment by check is preferred. Families can obtain an account history showing deposits and purchases for students who use their ID card by calling the kitchen manager. Account histories are not available for students who pay cash at lunch.

The cost of a USDA lunch is \$2.75 and reduced lunch is 40 cents. Ala carte and snack prices vary. Milk can be purchased for 50 cents. Periodically, we will run specials for lunch. The price will be \$2.80 these days and will take the place of the USDA lunch. There will be no charge for those who receive free lunch, and the reduced-priced meals will remain at 40 cents. Families eligible for free/reduced lunches must complete an application during registration. One application per family is necessary. Please list all family members. An updated application must be completed by the family during the school year if your income changes.

LUNCH ACCOUNT

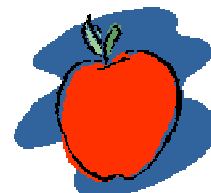
At registration, there will be a special table to accommodate parents who wish to deposit money in lunch accounts. Envelopes will be provided; be sure to list your child's ID number on the envelope and the memo section of your check. Please note any remaining lunch account balance will follow your student to the next Madison school. That means that any remaining 8th grade money will follow a student to LaFollette High School.

Lunch-Students are also welcome to bring lunch from home and purchase ala carte items and something to drink if they wish. All students have 30 minutes to eat lunch. Lunch times are as follows:

6th Grade-12:30-1:00

7th Grade 12:13-12:43

8th Grade 1:06-1:36



Breakfast

Breakfast is available at 7:35 am for 6th and 7th graders and at 9:17 am for 8th graders. Students will eat in their classrooms. The cost is \$1.35 (reduced and free breakfast is at no cost for those who qualify). There will only be one meal option for breakfast. Students must be on time for class. They must have their ID's and money in their lunch account.



BUS RIDER INFORMATION

Bus rider information and schedules will be available at registration. We will continue to sell both the **Youth 10-Ride and EZ Rider Pass cards**. We no longer sell individual, single tickets. If your child wants to ride only occasionally and you do not want to purchase a ride card, they can simply pay \$1.25 for each way. The cost for the 10-ride card is \$10.00. The EZ Rider Pass is \$150.00 for each semester. This option is the most economical if your child rides the bus to and from school each day of the semester with no more than 10 full days missed from school. Checks for EZ Rider passes are payable to "Madison Metro". If your child qualifies for free and reduced lunch this fee is waived. If a pass is lost, a \$10.00 replacement fee will be charged.



Cell Phones and Contacting Your Child During the Day

For many of us cell phones have become the central way that we communicate with our children as the day unfolds. Our policy on cell phone use is simple, before you come in the building-power off and secure it in a safe place. If a cell phone is used or goes off during the day, it will be confiscated and turned into the main office. For the first offense, the student must report for a conference with the Principal and the phone will be returned. There is also a loss of points from our student incentive program. If a second offense occurs, the phone will be kept and must be retrieved by an adult. If further offenses take place, the Principal will request that the student leave their phone at home, or agree to turn the phone into the main office at the start of each day. The phone will be secured for the day and the student can retrieve it upon exiting the building for the day.

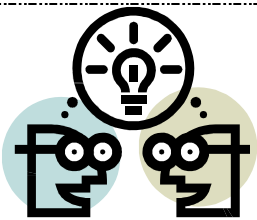
Each one of our classrooms has a phone that can be used by students once they secure teacher permission. If you need to reach your child during the day, you can simply call the main office number and the secretary will be happy to take a message or put you through to the home room teacher's voice mail. As you can imagine, the main office is a very busy place during the academic day. Taking phone calls to relay simple messages can take up quite a bit of time. Whitehorse office staff is not allowed to interrupt classes to relay messages. We ask that you be thoughtful and do your best to make arrangements before school so that the need to call is minimal.

Go To School Night-Save the Date!

Mark your calendars for the Whitehorse Middle School Go To School Night on **Wednesday, September 22nd from 6:00 - 7:30 p.m.** You will have an opportunity to meet all of your child's teachers, visit their classrooms and see just what it is that they do all day.

Going Shopping for School Clothing?

Don't forget to save some money for your Whitehorse clothing order. And please keep our dress code policy in mind when buying clothes. A basic guide is to purchase clothing that will help your child look and act like a focused learner. Stay away from clothes that reveal private body parts or promote violence, use of alcohol/drugs or demean a group of people in any way.



PCT Corner (Professional Collaboration Time)

Each month the "PCT Corner" will include a summary of the collaboration and training work that the staff is engaging in. The Whitehorse Middle School Leadership team met in July to review our School Improvement Goals and align PCT with enhancement of instruction for all students. Stay tuned for the exciting work that is about to take place!



Annie Greencrow Whitehorse Middle School Student Celebrations



Principal Recognition

- Students can be nominated at any time throughout the school year
- Students are nominated by teachers for special accomplishments or contributions to their classroom community
- The Principal visits the classroom and reads the nomination aloud and presents the student with a Principal's certificate

Student of the Month

- One student from each homeroom are nominated each month
- Nomination criteria includes: 75 points or more; good citizenship; and positive attitude towards learning.
- Students gather for a pancake breakfast with Ms. Ptak. They also receive a certificate of accomplishment, a Whitehorse Pride backpack and have their pictures posted in the hallway display case.
- Student names are then published in the monthly newsletter.

Bear Claws

- Students can receive a Bear Claw from any staff member for displaying positive character by showing respect for everyone, education and the environment.
- Students can use their Bear Claws to shop in the Bear Claw store each Thursday during their lunch period.

Quarterly Celebration Award Assemblies

Each quarter we gather in the gym to honor student accomplishments for the previous quarter. Student's names are read aloud as they stand to be acknowledged by their grade level peers. Certificates are given and student names are published in the monthly newsletter. The following accomplishments are honored:

- Honor Roll, defined as a 3.2 or above quarterly grade point average;
- Closing the Gap, defined by a .5 or greater increase in grade point average;
- Pride, given to each student with a 2.5 or higher grade point average, no unexcused absences, no behavioral referrals and less than three tardies;
- 100 points, given to those students who maintained 100 points at the end of the quarter.

Never Lost a Point

- Students who never lost a point all academic year gather at the end of the year for a special celebration with their peers.

Annie Greencrow Whitehorse Middle School Student Celebration Dates 2010-2011

Parents, if you would like to attend our quarterly student celebration assemblies, you are welcome to do so. Please note that these assemblies are on the following dates and times this school year. All assemblies will be in the gym.

Quarter Date	Quarter 1 Monday November 15, 2010	Quarter 2 Monday February 7, 2011	Quarter 3 Monday April 11, 2011
6th	8:40 AM	8:40 AM	8:40 AM
7th	7:50 AM	7:50 AM	7:50 AM
8th	9:40 AM	9:40 AM	9:40 AM

Additional 8th Grade events:

- 8th Grade Awards Assembly-Friday, June 3, 2011 7:50 AM Whitehorse Gymnasium
- 8th Grade Completion Ceremony-Thursday, June 9, 2011 10:30-11:30 AM Whitehorse Gymnasium



Whitehorse Middle School MSCR After School Programs - Clubs, Rec, and Sports

The goal of MSCR after school programs is to provide Whitehorse students a safe place to hang out after school while participating in positive social, recreational, and educational activities. Clubs, Sports, and Rec are free to all students! MSCR after school activities will begin in October. For specific times, dates, and activities, look for the after school calendar in the Whitehorse monthly newsletter.

Students must participate in a homework club, specialty club, or sport activity in order to attend the Rec Program.

Clubs

6th, 7th, and 8th grade homework clubs provide academic support for all students. Specialty clubs will be offered based on students' interest, staff availability, and funding.

Rec

The Rec program meets in the gym or a classroom and participates in fun games, sports, relays, arts and crafts, video games, community service projects, and much more!

Intramural Sports

After School sports are also sponsored by MSCR with staff members serving as coaches. Sports are available to girls and boys in 7th and 8th grade.

Fall Sports

Flag Football
Volleyball
Cross Country

Winter Sports

Boys Basketball
Girls Basketball

Spring Sports

Track and Field
Tennis
Softball
Soccer

If you have any questions please contact

Annie Hampel, Volunteer/After School Coordinator
204-4500 or 516-4195 akhampel@madison.k12.wi.us



Urban League of
Greater Madison
Building the Road to Economic Success

Urban League Schools of Hope Tutoring Program Whitehorse Middle School

The goal of the Schools of Hope Tutoring Program is to ensure that all students live up to their full academic potential; the program focuses specifically on decreasing the gap in academic achievement between students of color and white students in Dane County

Whitehorse students are matched with tutors to ensure they are prepared to successfully complete algebra and go on to graduate from high school.

- Any student at Whitehorse can participate in this program at no cost!
- Tutors will be working with students in classrooms, small groups, one on one, and individually during the school day and after school.
- To request a tutor to work with your child or to volunteer contact

Annie Hampel
Volunteer/After School Coordinator
204-4500
akhampel@madison.k12.wi.us

This program is made possible through financial support from the United Way, the City of Madison, and MMSD, the Urban League and Madison School-Community Recreation (MSCR).

Madison Metropolitan School District
Whitehorse Middle School
218 Schenk Street
Madison, WI 53714-2398

Non-Profit Org.
U.S. Postage
PAID
Madison, WI
Permit No. 1172



Before we know it the start of the 2010-2011 school year will be upon us. We are looking for parents to help out at registration in August. Please complete this form if you can help in any way. We appreciate all your help and support. We will call you in Mid-August to remind and confirm the date with you. Please check one or more dates that you could help us. Thank you.

Julie Cobb, Learning Coordinator, jcobb@madison.k12.wi.us
204-4498

_____	8th Grade Registration	
	Wednesday August 18, 2010	9:00-11:30
_____	7th Grade Registration	
	Thursday August 19, 2010	9:00-11:30
_____	6th Grade Registration	
	Friday August 20, 2010	9:00-11:30
_____	Make Up Day	
	Tuesday August 24, 2010	3:30-6:00

Name _____ Phone Number _____ E-Mail _____